

D.S.B.

Tegn.	Rev.	Godk.	Kalk.
29.10.63	15-11 63		
F.S.A.	L.H.		

Styreskive f. fjeder
(Indvendig)

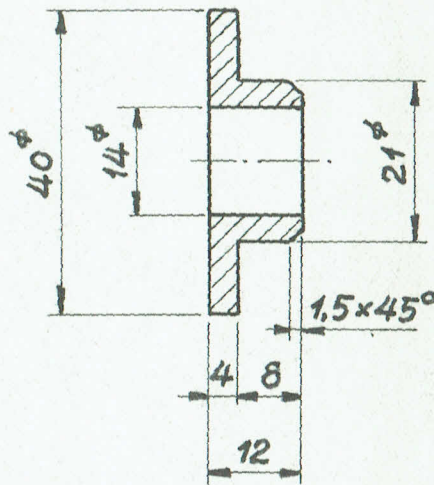
F-norm
3.900-1

Normen
erstatte

Materiale : St.37

Tegn. / Norm.	Pos.
MK 12.98	10
NV 12.99	1 og 2
IA _{II} 12.98	3
NV. 12.102	7
NV. 12.98	13
TGS. 12.96	6
PB 12.98	7
LON 22.38-4	
G. 12.98-7	
54511	5
FK. 12.97	12
MK _{II} 12.98	10

MK 12.97	
MK _{II} 12.98-1	
FK _{II} 12.97	12.



Forandringer.

1:1